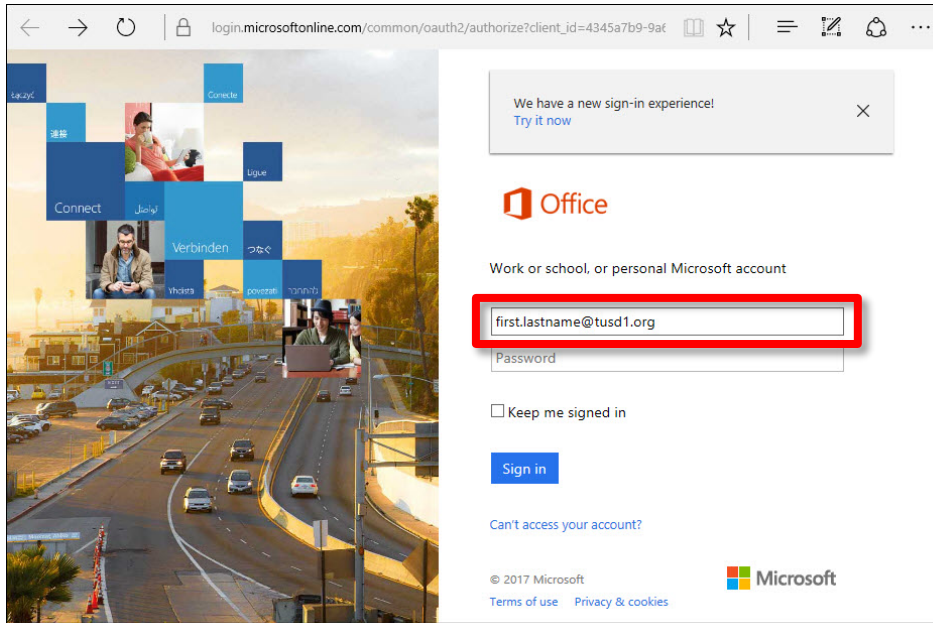
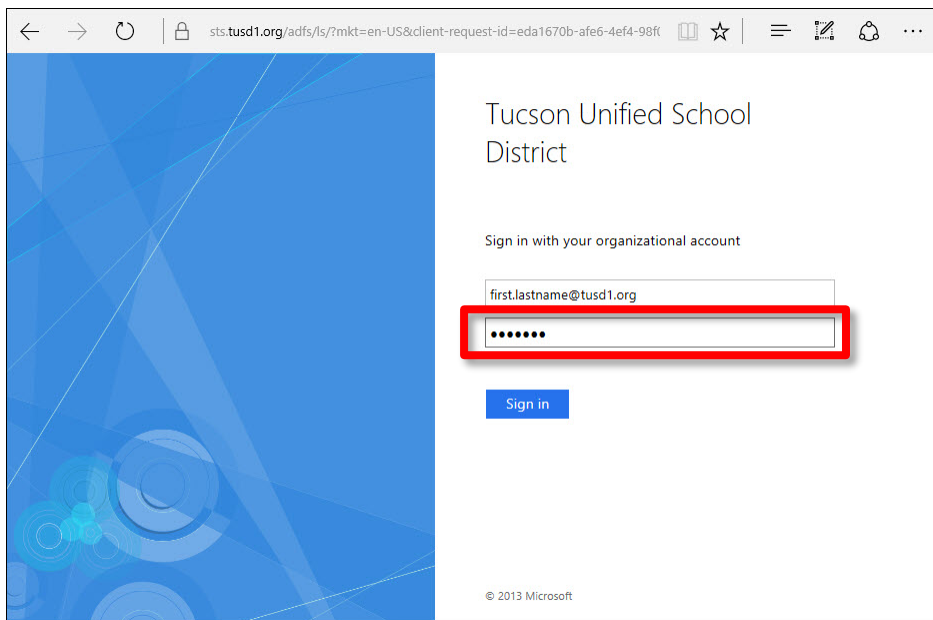


How do I log in to Office 365?

1. On your computer or mobile device, open your browser and go to the **Microsoft Login** page:
portal.office.com

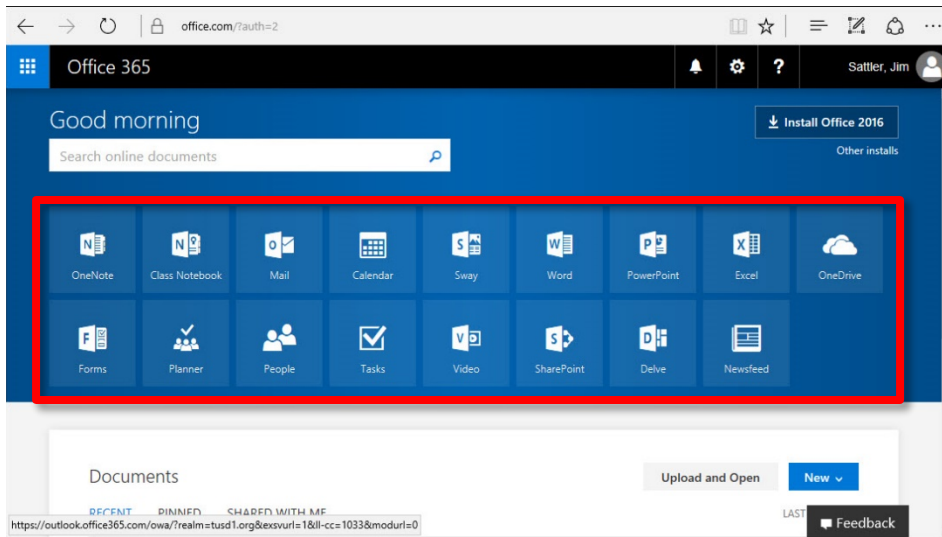


2. Enter your district email address.
3. When you click in the **Password** field, you will be redirected to the TUSD sign in page.



4. Enter your district network password and click **Sign in**.

5. The **Microsoft Office 365** dashboard opens. All your applications appear as tiles at the top.



6. Just click an application tile to get started!

Don't Click the Install Office 2016 Button on District Computers: We are in the process of installing **Office 2016** on district computers and laptops whether Windows 7 or Windows 10.